



Corona Virus Tracking Solution (SACHET)

Problem definition and scope

SACHET APP is to track and monitor the Corona positive and potential Corona affected (asymptomatic and symptomatic) persons for risk assessment, reporting of cases and crowdsourcing of data. This app is quite useful for international passengers as well as residents who have come close to affected persons close proximity. It will provide real time information to state, district, sub-district and medical officer levels authorities.

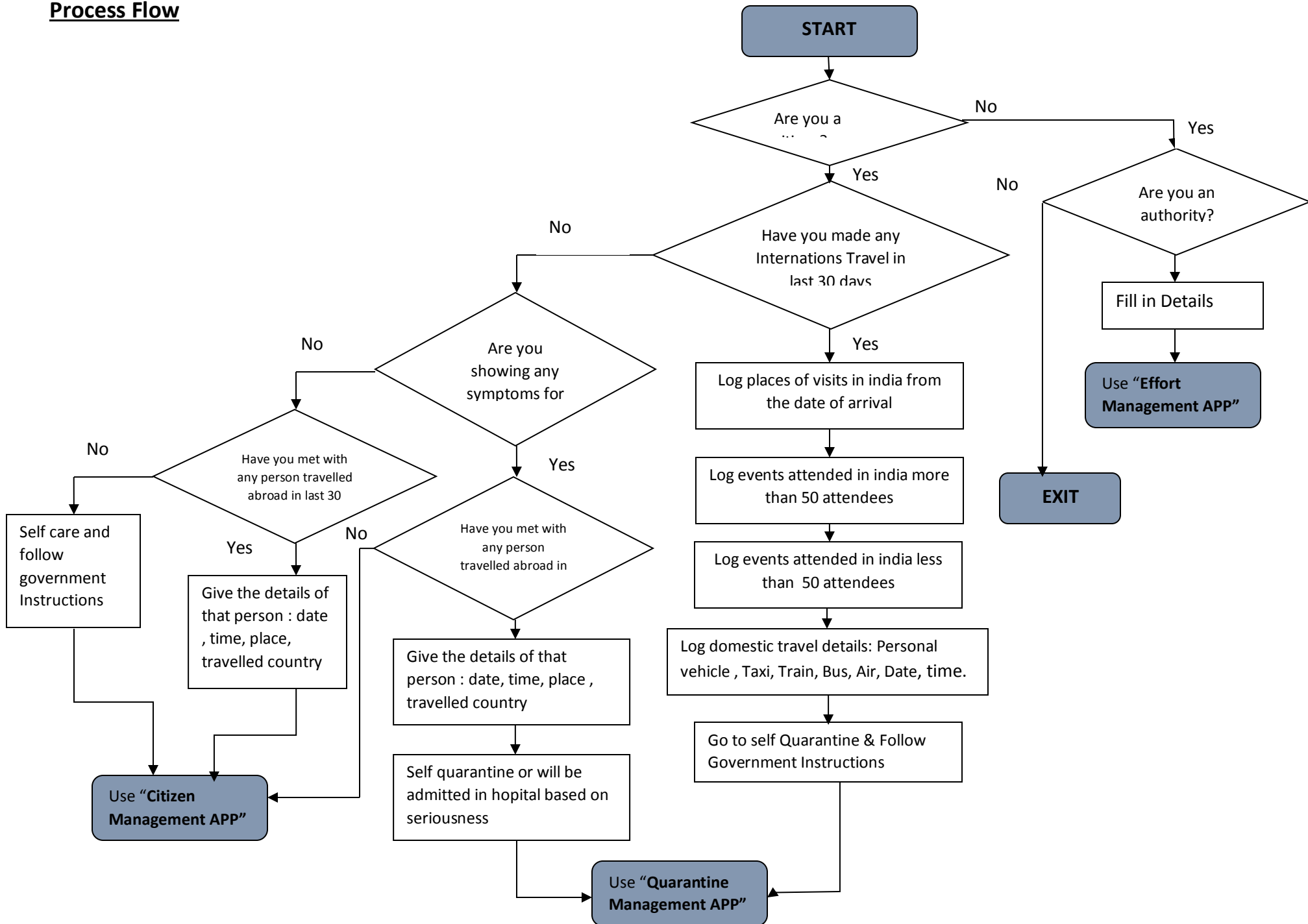
Three Parts:

- A quarantine management app (QMA) for citizens at risk identified by the administration,
- An operational management app/web portal for administration (state, district, sub district and medical officer levels)
- A general citizen app for risk assessment, reporting of cases and crowdsourcing of data.

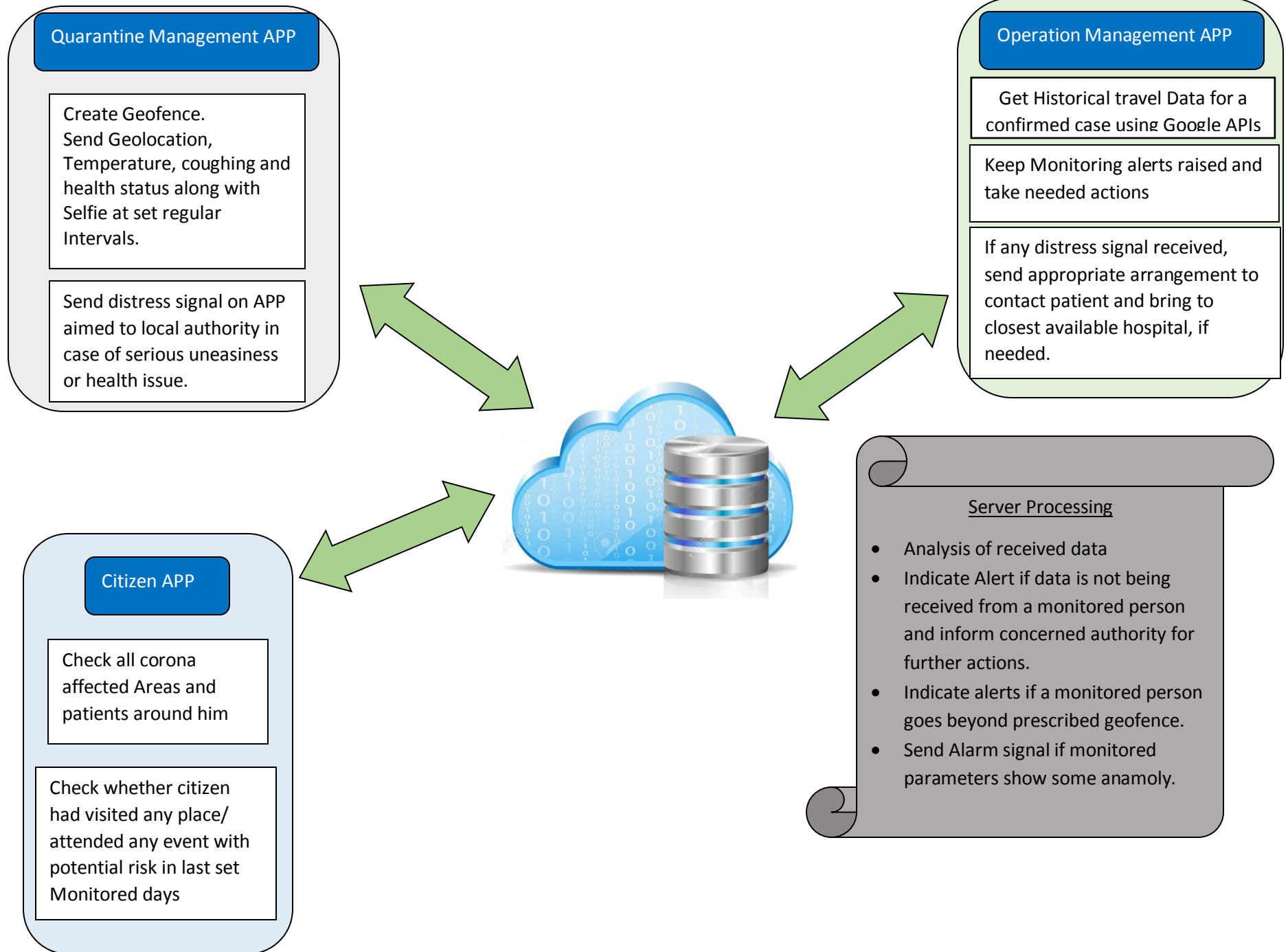
Create SACHET : Search All Corona affected Humans Track

- Send Temperature, other vital, location and movement of tracked person
- Should have Geofence and notifications for Entry and Exit

Process Flow



APPs Functionality and Integration



For Authority:

Authority must be able to see any movement for next 14days and send alert if unwanted movement.

For any user:

It must show any positive corona affected person close to him within 500 mtrs circle.

Implementation

i. Logo



ii. Registration with OTP verification/ Google login/ FB login

Visitor's details

Name

Mobile no

iii. Further Details

Age

Permanent Address

Visiting from countries within last 15 days

Quarantine Address